



ANGLOPHONE
SECTION
FONTAINEBLEAU

CE2

18th
September
2023

Primary Anglophone Section Teachers



Ms Fox
Main Language
CP/CE1/CE2 Coordinator



Mrs Waddington
CM1/CM2 Coordinator



Miss Jamieson
Main Language
Primary Teacher



Mrs Rangan
Primary Teacher



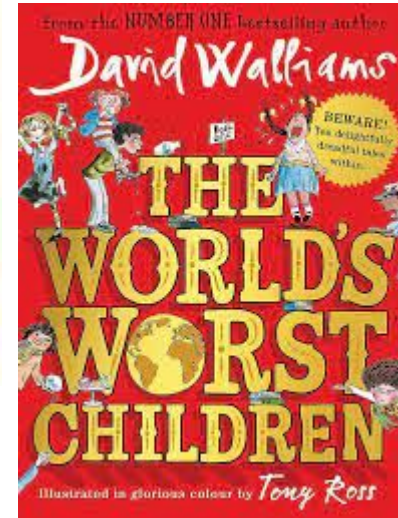
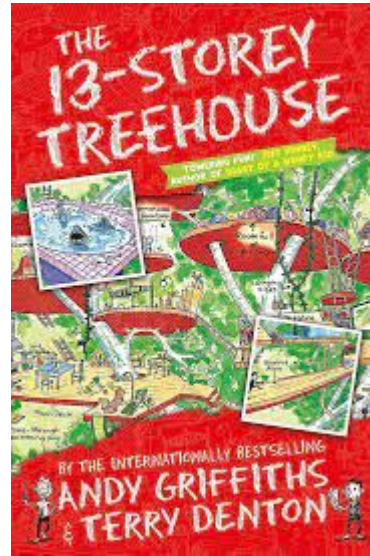
Mrs Coverdale
Primary Cover Teacher



Mr Coverdale
Primary Teacher
Anglophone Section Fontainebleau

READING

- Various novels

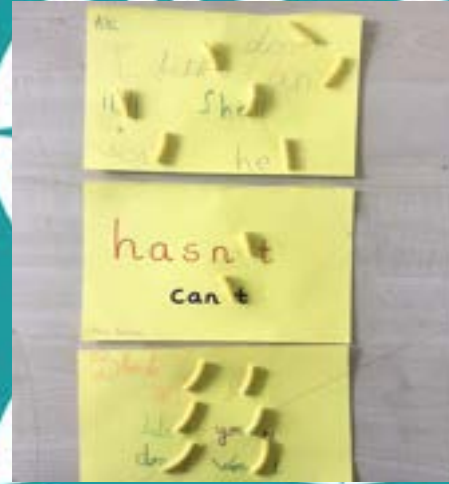
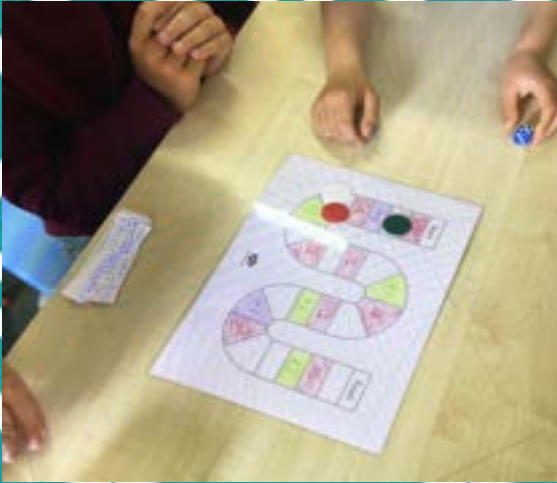


- Oxford reading series



Reading Framework

- Use phonic knowledge to decode new words.
- Read a wide range of common sight words.
- Pay attention to punctuation and read with expression.
- Read a variety of fiction and non-fiction texts.
- Make appropriate comments and predictions about texts.
- Begin to retrieve information and answer comprehension questions independently.



LANGUAGE

Spelling
Grammar
Punctuation
Vocabulary

WRITING

- Labels and captions
- Poetry
- Expanding simple sentences
- Personal writing
- Descriptive writing
- Instructional writing
- Story construction
- Topic reports



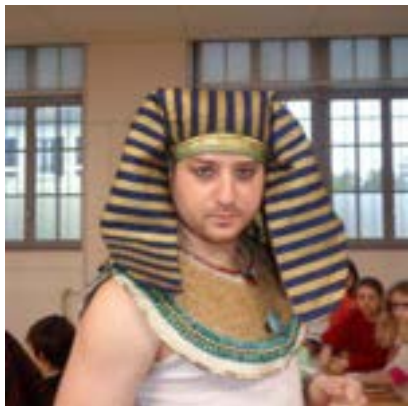
WRITING FRAMEWORK

- Use phonic knowledge to spell unknown words.
- Apply relevant spelling rules and patterns.
- Spell a wide range of common sight words correctly.
- Write correct grammatical sentences independently.
- Use a plan to begin writing a story.
- Write coherent stories with a beginning, middle and end.
- Begin to add more detail to descriptive writing.



Speaking and Listening FRAMEWORK

- Listen and respond to an increasing range and complexity of teacher instructions.
- Comment on characters and events of stories.
- Draw conclusions and predict outcomes.
- Discuss topics in small groups and report back to the whole class.



PROJECTS

- Ancient Egypt
- Rainforests
- Wild Cats
- Pirates
- Fair Trade
- Art History

HOMework



Monday for Friday



Monday for Friday

Reading Record

Date	Book	Signature

- Language

One activity sheet given every week. Spelling words to learn (for Monday).

- Reading

Please sign the reading log regularly (at least once every two weeks).

ASSESSMENT

- Progress in English Test
 - GL Assessment
- Weekly spelling tests
- Teacher assessment in class



**GL
Assessment**

PARENTS' EVENING AND REPORTS

- You will receive a report twice a year.
- You will be invited to a parent/teacher meeting after your child's first progress report.
- You may contact us for individual meetings at any time during the year.



To promote cooperation, team spirit, getting to know each other, fun and creativity, we are having a special 'Lego week' for each class level.

**LEGO
WEEK**

**20th -24th
November**



[HTTPS://WWW.PRIMARYBLOG.ANGLOSECTION.COM/](https://www.primaryblog.anglosection.com/)

School
Blog

ANY QUESTIONS?

Ms Fox - main language
l.fox@anglosection.com

Ms Jamieson - main language
l.jamieson@anglosection.com

Thank you for coming!